



OUR MISSION

WestCare's mission
is to empower everyone whom
we come into contact with
to engage in a process of healing,
growth and change,
benefiting themselves,
their families, coworkers and
communities.

“UPLIFTING THE HUMAN SPIRIT”

For Additional Information

The Admissions staff are available to provide information about The Village, the various programs available and admission procedures at (305) 573-DRUG (3784).

The Americans with Disabilities Act (ADA) guarantees equal opportunity for individuals with disabilities in public and private sector accommodations. WestCare Florida does not discriminate because of race, national origin, creed, color, sex, religion, age, disability, handicap condition, or sexual orientation. 2/8/11





WestCare Florida – Village South Children’s Center

Purpose

The Village South Children’s Center is approved by the Florida Department of Children and Families as a day-care facility. This child-care/day-care component consists of a day and evening child-care program for children who are either current residents of The Village with their mothers/fathers. The Children’s Center was recognized by Miami-Dade County in 2002 as the County’s “Best Small Day Care.”

Services and Scope

The Village provides family and maternal-child bonding activities, as well as individual and group counseling, prevention education, academic tutoring and FCAT preparation. Pediatric case managers mentor parents in navigating the public school system and advocate children’s needs by attending school meetings with parents. The target populations for the Children’s Center are children ages 0-12 residing at the Village South with their parents.

Funding Source(s)

The Children’s Center is funded by The Children’s Trust.



For Additional Information

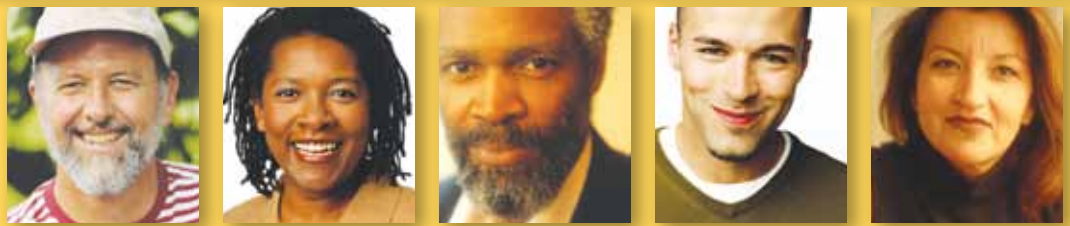
The Admissions staff are available to provide information about The Village, the various programs available and admission procedures at (305) 573-DRUG (3784).

“Uplifting the Human Spirit”

The Americans with Disabilities Act (ADA) guarantees equal opportunity for individuals with disabilities in public and private sector accommodations. WestCare Florida does not discriminate because of race, national origin, creed, color, sex, religion, age, disability, handicap condition, or sexual orientation.

Assessment of a client’s ability to pay for a portion, or all, of the cost of treatment is determined on a case-by-case basis. Some programs may have a waiting list.





WestCare Florida – Village South Admissions Department

Purpose

The Admissions Department is responsible for the initial assessment and intake evaluation of clients seeking substance abuse treatment at The Village South. Clients may be self-referred or referred from various sources in the community, including local hospitals and clinics, the judicial system, homeless shelters, case managers, employee assistance programs and private insurance companies. The circumstances involved in a client's decision to seek treatment can be complex and multidimensional, and it is the role of the Admissions Department to facilitate a smooth transition of the client into treatment.

Services and Scope

During the initial contact with a client, Admissions staff members focus on the immediate needs of the client and work with the client, the family and referral sources to determine the appropriate level of service for each person. The intake procedure entails an in-depth clinical assessment conducted by a therapist at the Admissions Department and utilizes standardized measurement tools that provide a comprehensive assessment of the client's substance abuse problem and history. The Admissions Department also provides a brief intervention service for clients who require assistance with various mental health and social issues prior to admission. The Admissions Department operates Monday through Friday from 9:00 a.m. to 5:00 p.m. Walk-ins are accommodated when available; however, appointments are strongly encouraged.

Funding Source(s)

The Village South is funded by the State of Florida Department of Children and Families and Miami Dade County.



For Additional Information

The Admissions staff are available to provide information about The Village, the various programs available and admission procedures at (305) 573-DRUG (3784).

"Uplifting the Human Spirit"

The Americans with Disabilities Act (ADA) guarantees equal opportunity for individuals with disabilities in public and private sector accommodations. WestCare Florida does not discriminate because of race, national origin, creed, color, sex, religion, age, disability, handicap condition, or sexual orientation.

Assessment of a client's ability to pay for a portion, or all, of the cost of treatment is determined on a case-by-case basis. Some programs may have a waiting list.





WestCare Florida – Village South Adolescent Treatment Program

Purpose

The Adolescent Male Co-Occurring Diagnosis Treatment Center and The Adolescent Female Co-Occurring Diagnosis Treatment Center are located in separate gender-specific facilities and comprise The Village's Adolescent Treatment Programs. They are a multimodality program, including residential treatment for female and male adolescents 11–18 years of age whose admission results from a co-occurring diagnosis involving both a psychiatric and substance use disorder.

Services and Scope

Both of the Village Adolescent Residential Treatment Centers provide individual, family and group therapy, case management services, psychiatric evaluation and follow-up, psychological evaluation, treatment planning, urinalysis monitoring, recreational therapy and involvement in weekly NA/AA self-help groups, as well as other diverse activities. Program benefits include decreased use and dependence on alcohol and other drugs, increased abstinence and/or safer sex practices, decreased family conflict, increased academic performance and mental health counseling and psychiatric services.

Funding Source(s)

The Adolescent Treatment Program is funded by the State of Florida Department of Children and Families.



For Additional Information

The Admissions staff are available to provide information about The Village, the various programs available and admission procedures at (305) 573-DRUG (3784).

“Uplifting the Human Spirit”

The Americans with Disabilities Act (ADA) guarantees equal opportunity for individuals with disabilities in public and private sector accommodations. WestCare Florida does not discriminate because of race, national origin, creed, color, sex, religion, age, disability, handicap condition, or sexual orientation.

Assessment of a client's ability to pay for a portion, or all, of the cost of treatment is determined on a case-by-case basis. Some programs may have a waiting list.

2/8/11





WestCare Florida – Village South Adult Outreach

Purpose

The Adult Outreach Program seeks to reduce the negative impact and cost of substance abuse on our community and its families. This program serves the many diverse communities of Miami-Dade County by providing linkages to social services that the clients would not otherwise access. The target populations for the Outreach Program are persons ages 18 and up in need of substance abuse prevention or treatment services, who reside in Miami-Dade County.

Services and Scope

Trained outreach specialists work to identify persons in need of substance abuse services ranging from prevention to intervention to treatment and work, and to diligently match these persons with existing community resources. The outreach specialists empower the client to access needed services and assist them in navigating the substance abuse services delivery system within Miami-Dade County. Our program effectively increases clients' acceptance and readiness for services, resulting in more efficient utilization of and retention within programs. The array of services with which clients are connected include residential and outpatient substance abuse treatment, HIV counseling and testing, mental health counseling, domestic violence counseling, emergency shelter, job training, and various educational services. Through this vital program, The Village touches some 10,000 individuals annually through community outreach. Program benefits include increased identification of persons with substance-related issues, referral and linkage to community services and resources, and increased utilization of substance abuse related, clinic and other community-based services.

Funding Source(s)

The Adult Outreach program is funded by the State of Florida Department of Children and Families and Temporary Assistance to Needy Families.



For Additional Information

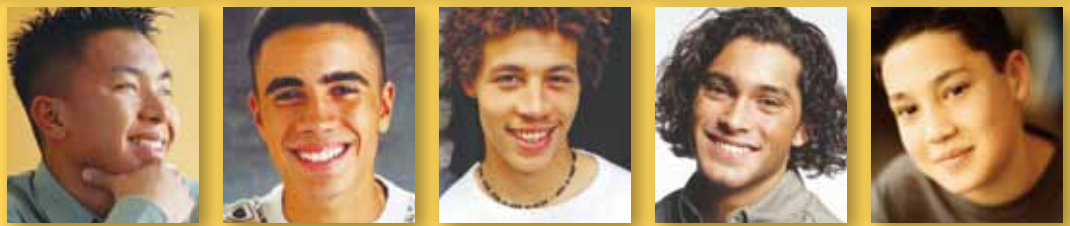
The Admissions staff are available to provide information about The Village, the various programs available and admission procedures at (305) 573-DRUG (3784).

"Uplifting the Human Spirit"

The Americans with Disabilities Act (ADA) guarantees equal opportunity for individuals with disabilities in public and private sector accommodations. WestCare Florida does not discriminate because of race, national origin, creed, color, sex, religion, age, disability, handicap condition, or sexual orientation.

Assessment of a client's ability to pay for a portion, or all, of the cost of treatment is determined on a case-by-case basis. Some programs may have a waiting list.





WestCare Florida – Village South Boys to Boys Program

Purpose

The Boys to Boys Prevention Education and Outreach Program targets young men who have sex with men (YMSM) ages 13 to 24 years old who reside or frequent South Beach. It also assists sex partners of the target population. The program also targets places where they congregate, including street corners, gay bars, parks and selected areas throughout the community, to provide immediate individual counseling or small group presentations. The Boys to Boys Program also offers peer education and specially designed workshops held at our Miami Beach location.

Services and Scope

Boys to Boys promotes education to youth about their bodies, their sexuality, and their physical and emotional health. Boys to Boys services exist as a supportive environment to help LGBTQ youth and young adults deal with sexuality and personal growth issues. Our purpose is to enable clients to become more comfortable with themselves, regardless of sexual orientation or gender identification. Boys to Boys promotes healthy, integrated lives and combats homophobia by providing support, education and referral services. The support groups for LGBTQ youth concentrate on the following topic: exploring feelings about being or potentially being GLBT, what it means to be gay, bisexual, transgender or questioning youth. This program combines outreach services, HIV testing and counseling services and psycho-social educational support groups. Youth services include directed, community-based outreach activities; on-site HIV counseling and testing; referrals to comprehensive youth prevention case management; and linkages with care

Funding Source(s)

The Boys to Boys program is funded by Miami-Dade County and The Alliance for Human Services.



For Additional Information

The Admissions staff are available to provide information about The Village, the various programs available and admission procedures at (305) 573-DRUG (3784).

“Uplifting the Human Spirit”

The Americans with Disabilities Act (ADA) guarantees equal opportunity for individuals with disabilities in public and private sector accommodations. WestCare Florida does not discriminate because of race, national origin, creed, color, sex, religion, age, disability, handicap condition, or sexual orientation.

Assessment of a client's ability to pay for a portion, or all, of the cost of treatment is determined on a case-by-case basis. Some programs may have a waiting list.





WestCare Florida – Village South Children’s Services Center

Purpose

The Village Children’s Services Center provides comprehensive and integrated evaluation, prevention, intervention and treatment services to the children (aged 0-16 years) whose parents are receiving substance abuse treatment in The Village Families in Transition Program. Service delivery is individualized to the specific developmental needs of the child based on a comprehensive evaluation completed by a psychiatrist and/or a psychologist.

Services and Scope

Child therapists provide play, group and individual therapy at least one time weekly. The child and parent also receive comprehensive case management services. School-aged children receive homework assistance and tutoring by an academic specialist at least three times weekly. A prevention specialist provides an HIV, STD, and Pregnancy Postponement curriculum weekly to children ten years and older. Average length of involvement in the program is six months. The primary goals of The Children’s Services Center are to increase protective factors, reduce risk factors and improve the mental health, social functioning and academic achievement of the children. The Center operates from a systemic treatment model. Therefore, the children’s care and services are integrated with the parents’ care and services to provide comprehensive, holistic family treatment services.

Funding Source(s)

The Village Children’s Services Center is funded by the State of Florida Department of Children and Families, Children’s Trust and Healthy Tomorrows.



For Additional Information

The Admissions staff are available to provide information about The Village, the various programs available and admission procedures at (305) 573-DRUG (3784).

“Uplifting the Human Spirit”

The Americans with Disabilities Act (ADA) guarantees equal opportunity for individuals with disabilities in public and private sector accommodations. WestCare Florida does not discriminate because of race, national origin, creed, color, sex, religion, age, disability, handicap condition, or sexual orientation.

Assessment of a client’s ability to pay for a portion, or all, of the cost of treatment is determined on a case-by-case basis. Some programs may have a waiting list.





WestCare Florida – Village South Compañeros Program

Purpose

The Village Compañeros Program is designed to provide integrated treatment services for substance abusing/dependent men through a full spectrum of services ranging from residential treatment to continuing care. Originally funded through SAMHSA, the program utilizes a Step-Down Model that offers a seamless continuum of services. The goals of the Compañeros en Recuperación Program is to reduce the incidence and prevalence of alcohol and other drugs use while increasing the psycho-social functioning of non-English-speaking Hispanic men.

Services and Scope

The Village Compañeros Program is unique, in having taken the most effective elements of environmental therapy and integrating them with a highly structured program of individual, group and family therapy. The Village Compañeros Program provides onsite medical care and addresses physical and/or sexual abuse trauma issues and mental health needs of the patients. The program provides safe housing, transportation, and educational instruction, English as a second language, vocational counseling and employment advocacy and family counseling/support groups. Most importantly, we continually instill hope (*esperanza*) for a life of recovery from the disease of addiction. Program benefits include decreased use and dependence on alcohol and drugs, increased English proficiency, increased employment, decreased dependence on public assistance and increased resolution of legal issues.

Funding Source(s)

The Village Compañeros Program is funded by the State of Florida Department of Children and Families.



For Additional Information

The Admissions staff are available to provide information about The Village, the various programs available and admission procedures at (305) 573-DRUG (3784).

“Uplifting the Human Spirit”

The Americans with Disabilities Act (ADA) guarantees equal opportunity for individuals with disabilities in public and private sector accommodations. WestCare Florida does not discriminate because of race, national origin, creed, color, sex, religion, age, disability, handicap condition, or sexual orientation.

Assessment of a client's ability to pay for a portion, or all, of the cost of treatment is determined on a case-by-case basis. Some programs may have a waiting list.

2/8/11





WestCare Florida – Village South Early Intervention

Purpose

The primary role of the HIV Early Intervention Program is to facilitate client risk-reduction behaviors in relation to HIV transmission. The Early Intervention Program utilizes the NIDA Community Based Outreach Model: A Manual to Reduce HIV and Other Blood-borne Infections in Drug Users. This proven, effective model has been adapted to be suitable for use in the residential treatment setting. Health education and risk-reduction components are delivered as a group-level intervention over four sessions.

Services and Scope

The early intervention specialist uses interactive skills to discern client concerns, needs and priorities and to provide information regarding technical aspects of HIV/AIDS. Clients are continually assessed in terms of their knowledge, behavior and attitudes relating to HIV risk factors. Individual-level interventions are based on this ongoing assessment process, and address individual client needs in relation to their HIV risks. Individual-level interventions are structured collaboratively with the client to increase their ability to meet basic needs and adapt risk-reduction behaviors. Program benefits include increased knowledge of HIV transmission, increased sex negotiation and communication skills and providing clients with behavioral change and support. The target populations for the Early Intervention Program are persons at risk for HIV infection due to their substance abuse histories, who are currently receiving substance abuse treatment in Miami-Dade County.

Funding Source(s)

The Early Intervention Program is funded by the State of Florida Department of Children and Families.



For Additional Information

The Admissions staff are available to provide information about The Village, the various programs available and admission procedures at (305) 573-DRUG (3784).

“Uplifting the Human Spirit”

The Americans with Disabilities Act (ADA) guarantees equal opportunity for individuals with disabilities in public and private sector accommodations. WestCare Florida does not discriminate because of race, national origin, creed, color, sex, religion, age, disability, handicap condition, or sexual orientation.

Assessment of a client's ability to pay for a portion, or all, of the cost of treatment is determined on a case-by-case basis. Some programs may have a waiting list.





WestCare Florida – Village South Families in Transition

Purpose

The Families in Transition (FIT) Program is a comprehensive, award-winning residential drug prevention and treatment program for substance abusing men and/or women and their children. The program began with the Federal Department of Health and Human Services SAMHSA grant in 1992. The program utilizes family systems theory to guide service planning. FIT serves drug-dependent men and/or women and their families by providing an array of treatment, intervention, educational and employment-oriented services including: substance abuse treatment, case management educational and vocational assessment, job development, placement and retention skills and services integrated throughout.

Services and Scope

The FIT Program focuses on the importance of parenting skills, family planning and economic self-sufficiency. A unique aspect of this program is there is no limit to the number of children allowed to reside with their parent(s) in treatment. The Village FIT Program received the Florida Alcohol and Drug Abuse Association's Best Practice Award (Grand Prize) in 2002. Program benefits include the decrease in the use of and dependence on alcohol and drugs, increased knowledge of parenting skills, reunification of children with their parents, increased family functioning, decreased family conflict, increased academic and emotional functioning of the children and decrease in trauma symptoms using the Seeking Safety curriculum. The FIT Program targets drug-dependent adults and/or pregnant women, their children and families residing in Miami-Dade and Monroe counties.

Funding Source(s)

The Families in Transition Program is funded by the State of Florida Department of Children and Families and the Center for Substance Abuse and Treatment.



For Additional Information

The Admissions staff are available to provide information about The Village, the various programs available and admission procedures at (305) 573-DRUG (3784).

"Uplifting the Human Spirit"

The Americans with Disabilities Act (ADA) guarantees equal opportunity for individuals with disabilities in public and private sector accommodations. WestCare Florida does not discriminate because of race, national origin, creed, color, sex, religion, age, disability, handicap condition, or sexual orientation.

Assessment of a client's ability to pay for a portion, or all, of the cost of treatment is determined on a case-by-case basis. Some programs may have a waiting list.





WestCare Florida – Village South Healthy Start

Purpose

The Healthy Start Program for pregnant women and infants is intended to provide services that will help with a healthy birth outcome and/or healthy infant. Services include nutrition, psycho-social counseling, smoking cessation, childbirth education, breast-feeding education, support care coordination and parenting skills.

Services and Scope

Healthy Start services are individualized and provided onsite and in-home to best meet the client's needs. The program receives its referrals from OB/GYN providers who complete prenatal screens that are processed by the Department of Health Program Office. The Healthy Start Coalition also forwards self-referrals and referrals from the community-based providers. Referrals received are evaluated for highest risks and distributed to the care coordinator/case managers, who make the initial contact with the client. The client then receives a comprehensive assessment and assists in the development of their plan of care. The care coordinator/case manager provides referrals to community resources and establishes regular follow-up.

Funding Source(s)

The Healthy Start Program is funded by the Miami-Dade Healthy Start Coalition.



For Additional Information

The Admissions staff are available to provide information about The Village, the various programs available and admission procedures at (305) 573-DRUG (3784).

“Uplifting the Human Spirit”

The Americans with Disabilities Act (ADA) guarantees equal opportunity for individuals with disabilities in public and private sector accommodations. WestCare Florida does not discriminate because of race, national origin, creed, color, sex, religion, age, disability, handicap condition, or sexual orientation.

Assessment of a client's ability to pay for a portion, or all, of the cost of treatment is determined on a case-by-case basis. Some programs may have a waiting list.





WestCare Florida – Village South Improv

Purpose

The Village Improv Program is a nationally endorsed, peer-to-peer program that utilizes improvisational theater to educate at-risk youth audiences about substance abuse, HIV/AIDS and violence. Improv's entertaining, real-life presentations consist of skits developed by at-risk student performers to deliver important education and prevention skills to similar vulnerable youth in school and community-based settings.

Services and Scope

The Improv Program, which has been performing successfully for eight years, trains troubled youth ages 14–18, and has reached more than 8,000 at-risk youth in this time. By preparing for and presenting the performances, Improv members demonstrate the skills, behaviors and attitudes that they need to learn themselves (simulation of positive behavior) to avoid problem behavior. Significant reflection takes place as they create, evaluate, plan and revise skits together after school, augmenting skills of positive thought, self-respect, flexibility, adaptability, responsibility, persistence, resilience and problem-solving. Improv is a service-learning project that provides members with an opportunity to help others, while improving their own leadership and academic skills. Program benefits include the following: grasping the cognitive misperceptions that may lead to substance abuse; expressing a desire not to abuse substances; understanding the sequence of substance abuse and consequences of using substances; correcting myths concerning substance abuse; demonstrating effective communication, coping, and self-control skills, and stating a commitment to discuss substance abuse with others.

Funding Source(s)

The Improv Program is funded by The Children's Trust.



For Additional Information

The Admissions staff are available to provide information about The Village, the various programs available and admission procedures at (305) 573-DRUG (3784).

“Uplifting the Human Spirit”

The Americans with Disabilities Act (ADA) guarantees equal opportunity for individuals with disabilities in public and private sector accommodations. WestCare Florida does not discriminate because of race, national origin, creed, color, sex, religion, age, disability, handicap condition, or sexual orientation.

Assessment of a client's ability to pay for a portion, or all, of the cost of treatment is determined on a case-by-case basis. Some programs may have a waiting list.





WestCare Florida – Village South Life Involves Family Empowerment (LIFE)

Purpose

The Village LIFE Project provides in-home/onsite family therapy to adolescents who exhibit moderate or severe substance abuse problems. Family therapists provide individual and family therapy twice per week. Therapy is a family-focused intervention, involving a structured process of continuous engagement with the adolescent, siblings, their parents and other family members. Therapy emphasizes youth and parent skill building, parent and adolescent relationship building, therapeutic interaction and crisis intervention, as needed.

Services and Scope

The LIFE Program builds on family assets, working from points of strength rather than weaknesses. Services provided through LIFE include comprehensive assessment, service and treatment planning, case management, individual and family therapy and urinalysis monitoring. The average length of participation is three to four months. Participation in LIFE assists adolescents in stopping or reducing their alcohol and drug use and improving their overall quality of life. Families benefit from enhanced functioning and cohesiveness and reduction in conflict and disorganization. Participants in LIFE may be eligible to participate in a NIDA-sponsored research study of Brief Strategic Family Therapy (BSFT) in collaboration with The University of Miami. The target populations for the LIFE Program are youth, ages 13–17 who reside in Miami-Dade County and are abusing or dependent on alcohol or drugs, and their parents.

Funding Source(s)

The LIFE Program is funded by the State of Florida Department of Children and Families.



For Additional Information

The Admissions staff are available to provide information about The Village, the various programs available and admission procedures at (305) 573-DRUG (3784).

“Uplifting the Human Spirit”

The Americans with Disabilities Act (ADA) guarantees equal opportunity for individuals with disabilities in public and private sector accommodations. WestCare Florida does not discriminate because of race, national origin, creed, color, sex, religion, age, disability, handicap condition, or sexual orientation.

Assessment of a client’s ability to pay for a portion, or all, of the cost of treatment is determined on a case-by-case basis. Some programs may have a waiting list.





WestCare Florida – Village South Miami Beach Coalition

Purpose

The Miami Beach Coalition for a Safe and Drug Free Community (MBCSDFC) in Miami-Dade, in cooperation with The Village South, seeks collaboration between organizations agreeing to work together in unity toward one common goal: to reduce substance abuse and promote the factors that minimize the risk of substance abuse among youth in the Miami Beach area. The Miami Beach Coalition strives to implement measurable/achievable outcomes, and to sustain and expand the Coalition to consist of key community stakeholders, agencies, service providers and governmental entities to address new or emerging alcohol, tobacco and other drug problems.

Services and Scope

The Miami Beach Coalition benefits are to establish and strengthen collaboration among communities, private nonprofit agencies and governmental entities on Miami Beach in order to support the efforts of a coalition to prevent and reduce tobacco, alcohol and other illegal drug use among youth and, over time, among adults by decreasing risk factors and increasing protective factors and resiliency in the youth who reside on and frequent Miami Beach. The goal is to increase the age of onset of and/or reduce the use of tobacco, alcohol, and drugs among first time juvenile offenders. The target populations for the project are young men, ages 11–18, who have sex with men; the family unit; elderly; gays/lesbians; transients; and religious communities.

Funding Source(s)

The Miami Beach Coalition is funded by the Substance Abuse and Mental Health Services Administration.



For Additional Information

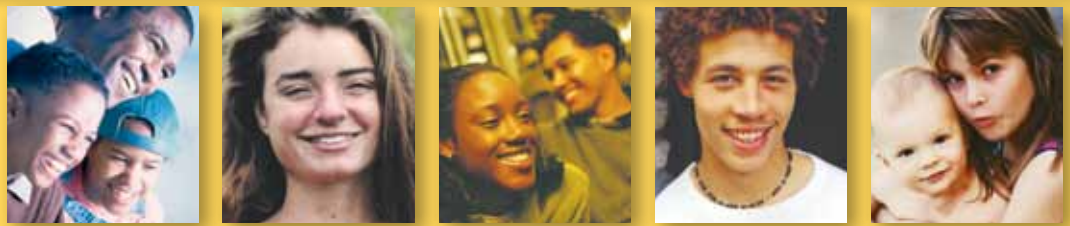
The Admissions staff are available to provide information about The Village, the various programs available and admission procedures at (305) 573-DRUG (3784).

“Uplifting the Human Spirit”

The Americans with Disabilities Act (ADA) guarantees equal opportunity for individuals with disabilities in public and private sector accommodations. WestCare Florida does not discriminate because of race, national origin, creed, color, sex, religion, age, disability, handicap condition, or sexual orientation.

Assessment of a client's ability to pay for a portion, or all, of the cost of treatment is determined on a case-by-case basis. Some programs may have a waiting list.





WestCare Florida – Village South Outpatient Treatment

Purpose

The Outpatient Programs consist of group and individual substance abuse and mental health counseling, education and relapse prevention for individuals who may be referred through family, employer, HMO, government, the justice system or as a continuum of care for the Village’s residential clients. Individuals are placed in one of eight outpatient programs (day and night) to accommodate work and parenting schedules.

Services and Scope

The Outpatient Programs offer varying levels of treatment services, ranging from the Intensive Outpatient Program that provides 11 hours of group and individual therapy, to the Aftercare Program that entails one group session per week. Additional services provided by the Outpatient Department include a Continuing Care Program with child-care services for women and children who are discharged from residential treatment. This Continuing Care Program includes in-home therapy and case management services, in addition to weekly group therapy. The Outpatient Department also provides a specialized program for clients living with HIV. This program utilizes an effective best-practice curriculum for risk reduction in clients who are living with HIV. Program benefits include decreased use and dependence on alcohol and drugs, increased knowledge of the disease of addiction and recovery process and the increased knowledge of a community-based support system.

Funding Source(s)

The Outpatient Program is funded by the State of Florida Department of Children and Families and the Miami-Dade County Ryan White.



For Additional Information

The Admissions staff are available to provide information about The Village, the various programs available and admission procedures at (305) 573-DRUG (3784).

“Uplifting the Human Spirit”

The Americans with Disabilities Act (ADA) guarantees equal opportunity for individuals with disabilities in public and private sector accommodations. WestCare Florida does not discriminate because of race, national origin, creed, color, sex, religion, age, disability, handicap condition, or sexual orientation.

Assessment of a client’s ability to pay for a portion, or all, of the cost of treatment is determined on a case-by-case basis. Some programs may have a waiting list.





WestCare Florida – Village South Ryan White

Purpose

The Ryan White Substance Abuse/HIV Treatment Program was funded by the Miami-Dade County Commissioners beginning in 1994 (under Title I). Initially, it provided beds for HIV-infected people whose chronic substance abuse requires intensive, comprehensive 90-day residential treatment. Currently The Village provides a full continuum of substance abuse services for those living with HIV, including out-reach, residential and outpatient programs and continuing care.

Services and Scope

The Ryan White Program treatment deals with chemical dependency and HIV-infection issues both separately and in their various synergistic dimensions. The Village also receives Ryan White Title I funds to provide residential treatment and case management substance abuse treatment to low-income, HIV-infected chronic substance abusers. Additionally, through funding from the Dade Community Foundation, The Village provides integrated mental health services, including assessment, medication management and individual, couples and family therapy. In 2004, The Village secured funding through the Centers for Disease Control and Prevention to provide Prevention Case Management Services to program participants and their partners. Ryan White program benefits include the decrease in use of and dependence on alcohol and drugs, increase in the knowledge of HIV transmission, increase in risk-reduction behaviors, increased ability to live healthy with HIV and access to vocational services.

Funding Source(s)

The Ryan White Program is funded by Miami-Dade County, The Centers for Disease Control and Prevention and the Dade Community Foundation.



For Additional Information

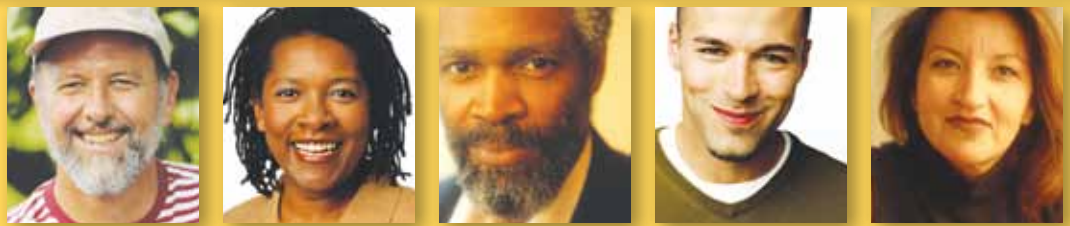
The Admissions staff are available to provide information about The Village, the various programs available and admission procedures at (305) 573-DRUG (3784).

“Uplifting the Human Spirit”

The Americans with Disabilities Act (ADA) guarantees equal opportunity for individuals with disabilities in public and private sector accommodations. WestCare Florida does not discriminate because of race, national origin, creed, color, sex, religion, age, disability, handicap condition, or sexual orientation.

Assessment of a client's ability to pay for a portion, or all, of the cost of treatment is determined on a case-by-case basis. Some programs may have a waiting list.





WestCare Florida – Primary Addiction Treatment

Purpose

The main focus and benefits for the Primary Addiction Treatment Program for individuals enrolled are a decrease in use and dependence on substances, increased employment, decreased dependence on public assistance, an increase in knowledge of HIV transmission and an increase in HIV risk reduction behaviors. This program is available to drug dependent adults, ages 18 and over who reside in Miami-Dade County, Florida.

Services and Scope

The program services 240 adults annually whose lives are adversely impacted by substance abuse. Individuals are assessed and referred to and admitted to the modality which best meets their changing needs at any given stage of the recovery process. The treatment process begins with a comprehensive assessment of the clients functioning in several areas. Next the client assists in the development of their individualized care plan. In addition to individual and group substance abuse counseling, the individual receives services ranging from couples and family therapy, medication management and support, HIV/AIDS education, GED preparation, employment counseling and vocational services, and housing assistance.

Funding Source(s)

The Village's Primary Addiction Treatment for Adult Men and Women is funded by the State of Florida, Department of Children and Families, private insurance, employee assistance programs and self-pay. The program consists of a continuum of care including engagement, outpatient treatment, intensive outpatient, day/night treatment, supportive housing, residential treatment, and continuing care.



For Additional Information

The Admissions staff are available to provide information about The Village, the various programs available and admission procedures at (305) 573-DRUG (3784).

"Uplifting the Human Spirit"

The Americans with Disabilities Act (ADA) guarantees equal opportunity for individuals with disabilities in public and private sector accommodations. WestCare Florida does not discriminate because of race, national origin, creed, color, sex, religion, age, disability, handicap condition, or sexual orientation.

Assessment of a client's ability to pay for a portion, or all, of the cost of treatment is determined on a case-by-case basis. Some programs may have a waiting list.





WestCare Florida – Additional Information

For additional information, please contact our
Regional Office at (305) 571-8600

Office hours:
Monday through Friday,
8:00 a.m. to 5:00 p.m.

Please direct your questions to:
Frank C. Rabbito, *Senior Vice President*
Phone: (305) 573-3784 e-mail: frabbito@westcare.com

Or write to us at:
WestCare Florida
3050 Biscayne Boulevard, Suite 900, Miami, Florida 33137-4143

Also, please visit our informative website at:
www.westcare.com

“UPLIFTING THE HUMAN SPIRIT”

The Americans with Disabilities Act (ADA) guarantees equal opportunity for individuals with disabilities in public and private sector accommodations. WestCare Florida does not discriminate because of race, national origin, creed, color, sex, religion, age, disability, handicap condition, or sexual orientation. 2/8/11

